



HALLAM & REDMIRE RANGERS JUNIOR FOOTBALL CLUB

Redmires Playing Field, Lodge Moor, 580 Redmires Road,
Sheffield, South Yorkshire, S10 4LJ
[what3words ///bats.book.noise]

Introduction

We hope you have a pleasant visit to Redmires Playing Field, the home of Hallam and Redmires Rangers JFC. The club has a reputation as a welcoming, inclusive club and has always supported the highest standard of fair play. This document should provide you with all the information you need for your visit. Please note we ask the following of visitors:

- Youth football should be fun for children - please help us to keep it that way by creating an enjoyable environment.
- Please celebrate effort and good play from both teams.
- Always respect the Referee and Coaches, and encourage players to do the same.
- Remember that the younger Referees are learning and are subject to the same safeguarding protections as players.
- Stay behind the 'Respect' line and within the Designated Spectators' Area (where provided).
- Never engage in or tolerate offensive, insulting or abusive language or behaviour.
- Refreshments are usually available from a small tuck shop adjacent to the pitch you are watching.
- If you are able to, we greatly appreciate your contribution to any fundraising activities such as raffles.
- Redmires Playing Field is 'dog friendly', and dogs can be walked outside the pitch areas.
- Please take away your litter.
- Have fun - it's what we are all here for!

Navigation

The ground is easy to find as it is right next to The Sportsman Pub, Lodge Moor. Please DO NOT park in the pub car park, as we have our own parking adjacent to the pitches (next gateway immediately on the left AFTER the pub).

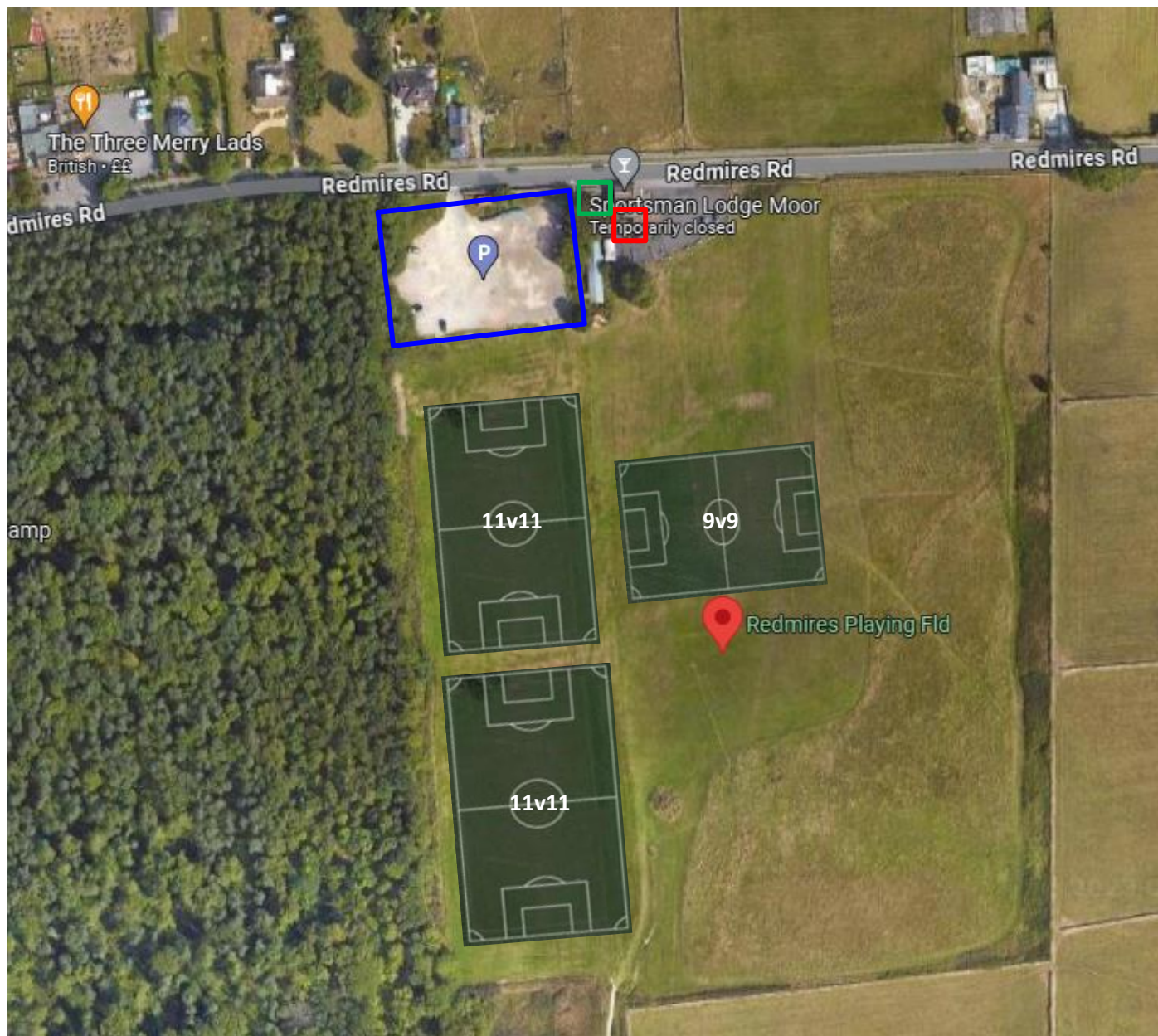


Parking

Please park your vehicles respectfully when visiting our venue, in the **blue** zone below. Do not block any access or egress points.

Toilets

A Portaloos is available at the grounds throughout the football season (September to April). This is indicated by the **green** zone on the map below.



Pitch Locations

Please see the above plan of pitch locations. If there is already a game ongoing, please spectate behind the Respect barrier until the game is complete and the pitch is available to use for a warm-up.

Defibrillator

A defibrillator (AED) is located on the wall of The Sportsman Pub (south-east corner facing the playing fields). This is indicated by the **red** zone on the above map. Should Cardiac Arrest occur, begin CPR immediately, and call 999 whilst sending someone else to collect the AED.