



HALLAM & REDMIRE'S RANGERS JUNIOR FOOTBALL CLUB

Hallam Primary School, Hallam Grange Crescent, Sheffield,
South Yorkshire, S10 4BD
[what3words ///dwell.flags.votes]

Introduction

We hope you have a pleasant visit to Hallam Primary School, the home of Hallam and Redmires Rangers JFC. The club has a reputation as a welcoming, inclusive club and has always supported the highest standard of fair play. This document should provide you with all the information you need for your visit. Please note we ask the following of visitors:

- Youth football should be fun for children - please help us to keep it that way by creating an enjoyable environment.
- Please celebrate effort and good play from both teams.
- Always respect the Referee and Coaches, and encourage players to do the same.
- Remember that the younger Referees are learning and are subject to the same safeguarding protections as players.
- Stay behind the 'Respect' line and within the Designated Spectators' Area (where provided).
- Never engage in or tolerate offensive, insulting or abusive language or behaviour.
- Refreshments are usually available from a small tuck shop adjacent to the pitch you are watching.
- If you are able to, we greatly appreciate your contribution to any fundraising activities such as raffles.
- Dogs are not permitted at these grounds.
- Please take away your litter.
- Have fun - it's what we are all here for!

Navigation

On entering the school driveway, take the first immediate left turn up a small incline to reach the car park. The fenced pitches are immediately adjacent, beyond the Hallam Community Hall building.

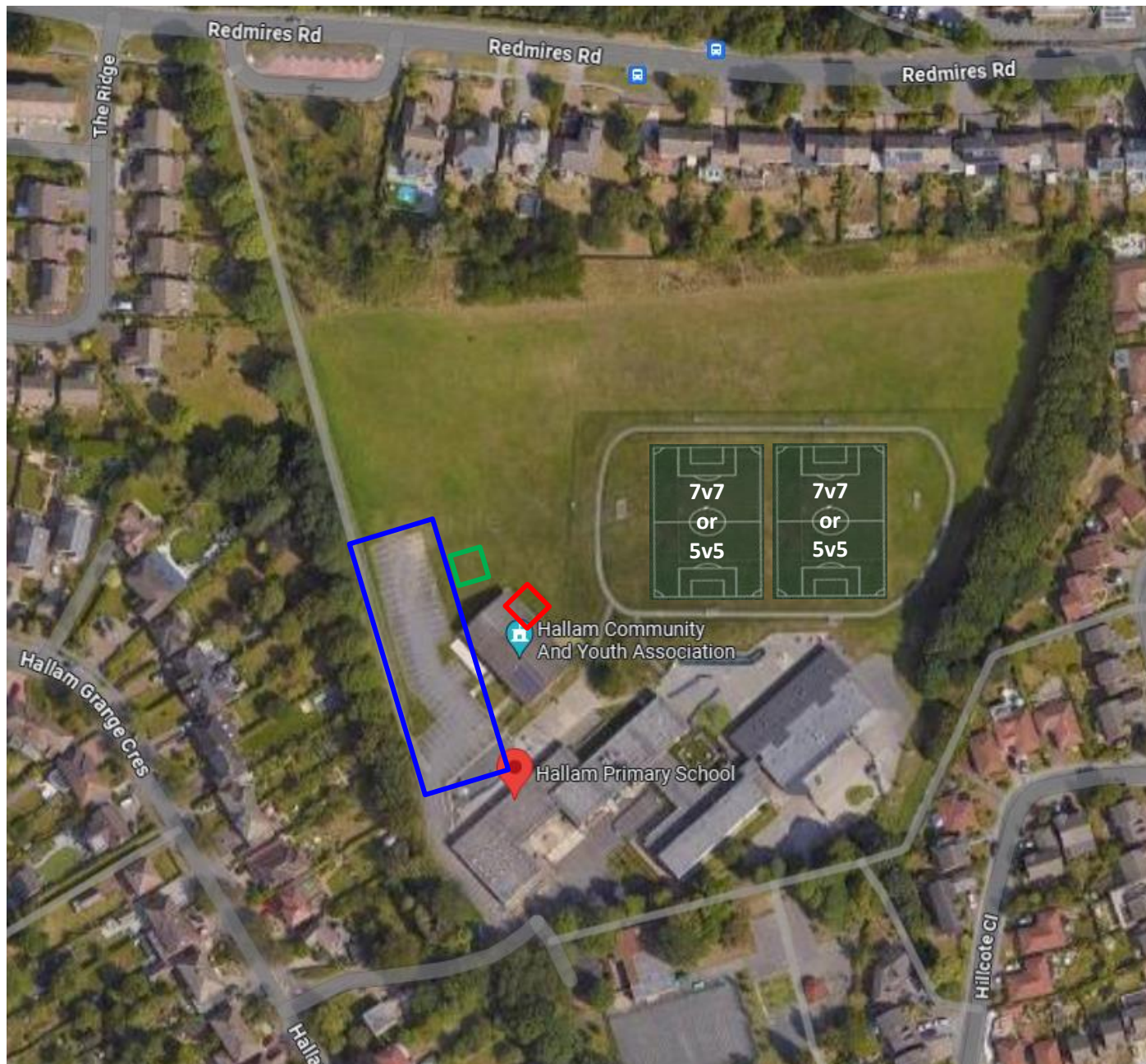


Parking

Please park your vehicles respectfully when visiting our venue, in the **blue** zone below. Do not block any access or egress points.

Toilets

A Portaloos is available at the grounds throughout the football season (September to April). This is indicated by the **green** zone on the map below.



Pitch Locations

Please see the above plan of pitch locations. If there is already a game ongoing, please spectate behind the Respect barrier until the game is complete and the pitch is available to use for a warm-up.

Defibrillator

A defibrillator (AED) is located on the wall of the Hallam Community Centre, facing the football pitches (on the east side of the building). This is indicated by the **red** zone on the above map. Should Cardiac Arrest occur, begin CPR immediately, and call 999 whilst sending someone else to collect the AED.